

VISUALLY/HEARING/MOBILITY-ADAPTED APARTMENTS FOR RENT  
**HUNTER'S POINT SOUTH LIVING**  
 1-50 50<sup>TH</sup> AVENUE & 1-55 BORDEN AVENUE, LONG ISLAND CITY, QUEENS



**Amenities:** 24-hour attended lobby, on-site resident manager, party room\*, outdoor terrace\*, gym\*, tech center\*, playroom\*, bike room\*, storage\* and urban farm\* (\*additional fees apply).

**Transit:** 7, E, G, M, LIRR, Q67, East River Ferry

**No application fee • No broker's fee • Smoke-free building**

Applications are being accepted for an available mobility/visual/hearing-adapted rental apartment and to replenish the waiting list of apartments at Hunter's Point South Living located at 1-50 50th Avenue & 1-55 Borden Avenue in the Long Island City neighborhood of Queens. This building was constructed through the Mixed Income Program of the New York City Housing Development Corporation and of the New York City Department of Housing and Development.

**The size, rent, and targeted income distribution is as follows:**

AMI Level	Units Available	Disability Set-Aside Designation	Apartment Size	Monthly Rent <sup>1</sup>	Household Size <sup>2</sup>	Minimum Income <sup>3</sup> - Maximum Income <sup>4</sup>
165% AREA MEDIAN INCOME (AMI)	1	Mobility Impairment	Studio	\$1,617	1 2	\$57,635 - \$131,340 \$57,635 - \$150,150
165% AREA MEDIAN INCOME (AMI)	1	Mobility Impairment	Studio	\$2,087	1 2	\$73,749 - \$131,340 \$73,749 - \$150,150
165% AREA MEDIAN INCOME (AMI)	1	Mobility Impairment	1-Bedroom	\$2,266	1 2 3	\$80,160 - \$131,340 \$80,160 - \$150,150 \$80,160 - \$168,960
165% AREA MEDIAN INCOME (AMI)	1	Visual/Hearing Impairment	1-Bedroom	\$2,266	1 2 3	\$80,160 - \$131,340 \$80,160 - \$150,150 \$80,160 - \$168,960

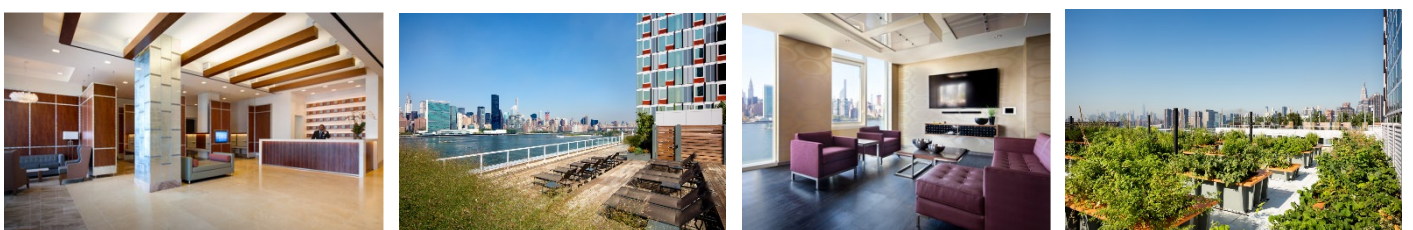
<sup>1</sup> Rent includes gas for heat and cooking. Tenant responsible for electricity.  
<sup>2</sup> Household size includes everyone who will live with you, including parents and children. Subject to occupancy criteria.  
<sup>3</sup> Minimum income listed may not apply to applicants with Section 8 or other qualifying rental subsidies. Asset limits also apply.  
<sup>4</sup>Income limits subject to change. Asset limits apply.

**How Do You Apply?**

Applicants will be required to meet income guidelines and additional selection criteria to qualify.

Applications may be requested in person by visiting our management office at:  
**1-50 50<sup>th</sup> Avenue, Long Island City, NY 11101**

Applications may also be requested by emailing [HPSLeasing@Related.com](mailto:HPSLeasing@Related.com).



**Mayor Bill de Blasio • HPD Commissioner Lousie Carroll • HDC President Eric Enderlin**

